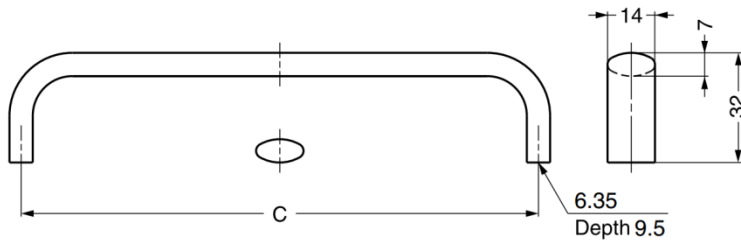


## GEK-S Stainless Steel 316 Handle

### Features

- Suitable for harsh and high corrosion environments

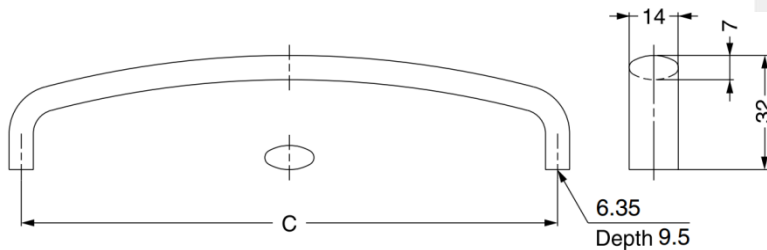


Part No.	Material	Finish	C
GEK-S635/M	Stainless Steel 316	Mirror	88.9
GEK-S635/S		Satin	
GEK-S640/M		Mirror	101.6
GEK-S640/S		Satin	
GEK-S650/M		Mirror	127
GEK-S650/S		Satin	
GEK-S660/M		Mirror	152.4
GEK-S660/S		Satin	

## GEK-R Stainless Steel 316 Handle

### Features

- Suitable for harsh and high corrosion environments



Part No.	Material	Finish	C
GEK-R635/M	Stainless Steel 316	Mirror	88.9
GEK-R635/S		Satin	
GEK-R640/M		Mirror	101.6
GEK-R640/S		Satin	
GEK-R650/M		Mirror	127
GEK-R650/S		Satin	
GEK-R660/M		Mirror	152.4
GEK-R660/S		Satin	